

MARO MONTHLY

with Northwell Health's Crisis Management Team

ISSUE NO 1 | June - 2023 | Volume 7



HELLO!

Welcome to another month of Northwell Health Crisis Management Team's newsletter, where you can share, learn about, and explore emergency management topics! Each month we will highlight different topics in emergency preparedness and emergency management, as well as healthcare administration. We encourage you to review our upcoming course offerings and other relevant information!

As always, we look forward to sharing our resources, hearing your suggestions, and getting to know you at our trainings.

The June 2023 newsletter will be centered around *Emergency Management and Incident Command for Nursing Homes and Assisted Living Facilities!*

OUR MISSION

To lead the health system and community in an efficient and effective way before, during, and after emergency situations.

OUR VISION

Northwell's Crisis Management Incident Response Team is committed to providing the surrounding community with a high-quality learning environment, training resources, and promoting an environment of collaboration with our training partners.



“One of the tests of leadership is the ability to recognize a problem before it becomes an emergency.”

– Arnold Glasow



Scan Here to Register for our courses!

Protecting the Most Vulnerable: *Emergency Management Considerations for Nursing Homes & Long-Term Care Facilities*



Nursing home and long-term care (LTC) residents are amongst healthcare’s most vulnerable and rely heavily on health care leaders to keep them stay safe in the event of emergencies. As such, it is crucial that nursing home, LTC and emergency management professionals consider this subset of the population when creating disaster response plans.

In the past, the elderly in nursing homes and LTC facilities have suffered during emergencies, most notably after events like Hurricane Katrina or Superstorm Sandy. More specifically, in the weeks following Hurricane Katrina seventy-eight dead bodies were found in Louisiana nursing homes (Hyer, 2010). In New York, following Superstorm Sandy over seven thousand patients and healthcare facilities residents were evacuated with limited tracking capabilities. This led to receiving healthcare facilities having no basic health records on patients and families being unable to locate their loved ones weeks after the storm hit (NYSDOH CTI, 2023).

Understanding how to integrate the Incident Command System (ICS) and emergency preparedness thinking into nursing homes and LTC facilities daily decision making can help save lives and property when disaster strikes.

Additional Considerations: *Nursing Home and Long-Term Care Residents May Need Assistance with Activities of Daily Living*

Activities of daily living, often referred to as ADLs, is a term used to describe fundamental skills required to care for oneself without assistance (Edemekong, 2022). ADLs include the following skills and tasks:



Often residents in nursing homes or LTC facilities are unable to perform some or all ADLs. Considering ADLs during emergency situations is crucial as the inability to accomplish ADLs can lead to unsafe conditions. It is necessary that healthcare team assess patients to access patients’ ability to perform ADLs to ensure that a patient’s needs are identified.

See below to understand Center for Medicare & Medicaid emergency preparedness guidelines:

Emergency Preparedness Guidelines for Long Term Care Facilities

As outlined by the Center for Medicare & Medicaid Services emergency preparedness final rule.

Emergency Plan
Develop and Maintain Emergency preparedness plans annually

Training & Testing
Develop a training and testing program based off the facility’s emergency plan.

Policies & Procedures
Develop and implement emergency preparedness policies and procedures based on the facilities emergency plan.

Emergency Power System
Implement an emergency and standby power system

Communication Plan
Develop a communication plan that complies with Federal, State, and local laws.

Integrated Health Systems
LTC facilities part of a health system, should have a unified and integrated emergency preparedness program.

Interesting Fact:



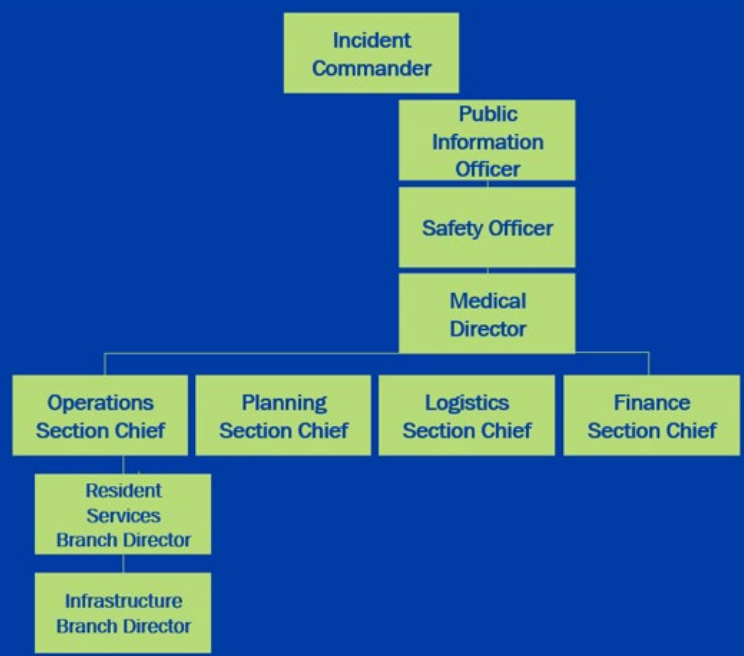
“There are more than 800,000 Americans residing in assisted living facilities.”

Source: “American Health Care Association; National Center for assisted Living”

The Nursing Home Incident Command System

The Incident Command System (ICS), which origins dates to the fire service in the 1970s, is a proven system for effectively managing disasters. The Incident Command System places an emphasis on the importance of a coordinated response to emergencies that go beyond typical day-to-day challenges. The Incident Command System utilizes a standard organizational structure and associated terminology to streamline disaster response. Although, the foundational components of ICS remain the same, diverse groups can optimize the Incident Command System to better align with their organization (NHICS,2017). For example, the Nursing Home Incident Command System (NHICS) was developed to respond to the specific needs of nursing home and long-term care facilities. The standardization of the Nursing Home Incident Command System allows for an increased ability of a given organization to respond to a disaster (NHICS,2017).

An example of the Nursing Home Incident Command organizational chart can be seen below. For more information on NHICS, please click [here](#).



Health System Highlights: The MARO RTC at Northwell Health's Crisis Management Places an Emphasis on eFINDS Training Program

The Evacuation of Facilities in Disasters System (eFNIDS) was created after the forced evacuations of over 7,800 patients and residents as a result of Superstorm Sandy in 2012. During this event, healthcare providers and families were often unable to locate evacuated persons as there was no formal mechanism for tracking evacuees statewide. In response to this, eFINDS a statewide, person tracking system, was developed. eFINDS allows healthcare professionals to safely track persons during a forced evacuation.

The MARO RTC at Northwell Health's Crisis Management recognizes the importance of the eFINDS training program as it allows healthcare facility to be well versed in the tracking program. Our training team consistently holds eFINDS training throughout Long Island and the Lower Hudson Valley. Use the link below to register for upcoming eFINDS training.

[REGISTER NOW](#)

Assisted Living in America: Looking at the Numbers

Assisted Living Community Data:

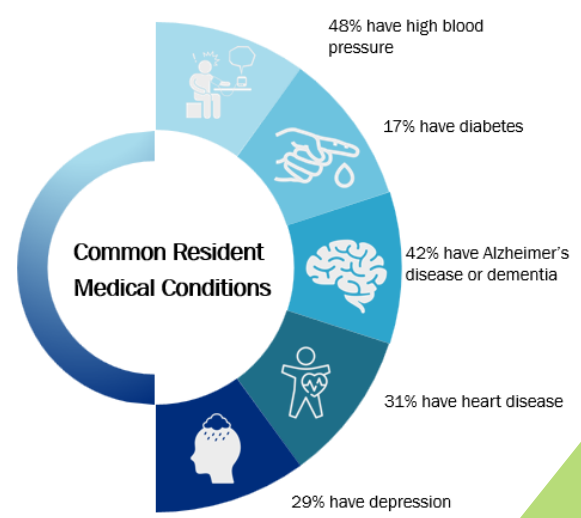
There are **30,600** assisted living communities
(and other residential care communities)

There is a total of **1.2 million** licensed beds

Assisted Living Resident Population Data:

There are approximately **818,800** residents nationwide

50% of Assisted Living Residents are **85 years** of age and older



Source: "American Health Care Association; National Center for assisted Living"

UPCOMING COURSES



Course: ICS 100

Date: 07/17/2023

Location: Webinar – Register through DHSES LMS



Course: ICS 800

Date: 07/18/2023

Location: Webinar – Register through DOH LMS



Course: eFINDs Train the Trainer

Date: 07/13/2023

Location: In-Person- Register through Northwell Crisis Management Website



Course: 4 Hour OSHA

Date: 07/19/2023

Location: In-Person- Register through the Crisis Management Website



Course: Emergency Management for Nursing Leadership

Date: 07/24/2023

Location: Webinar – Register through the DHSES LMS



Course: eFINDs Train the Trainer

Date: 08/10/2023

Location: In-Person- Register through Northwell Crisis Management Website

For the full list of upcoming courses visit the Crisis Management Website!

July 2023 MARO Monthly Topic:
Radiation Emergencies:
Preparedness, Mitigation, Response, Recovery



Submit your questions about Incident Management for Nursing Homes by scanning the QR code!



Contact Information:

1111 Marcus Ave, Lake Success New York, 11042

crisismanagementtraining@northwell.edu

www.northwellcrisismanagement.com